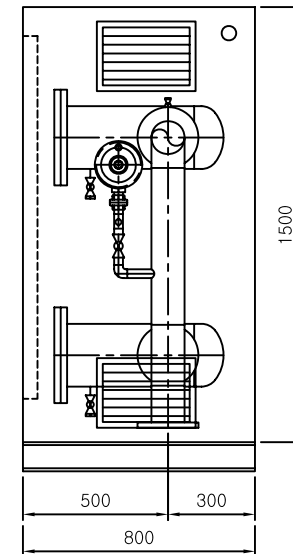


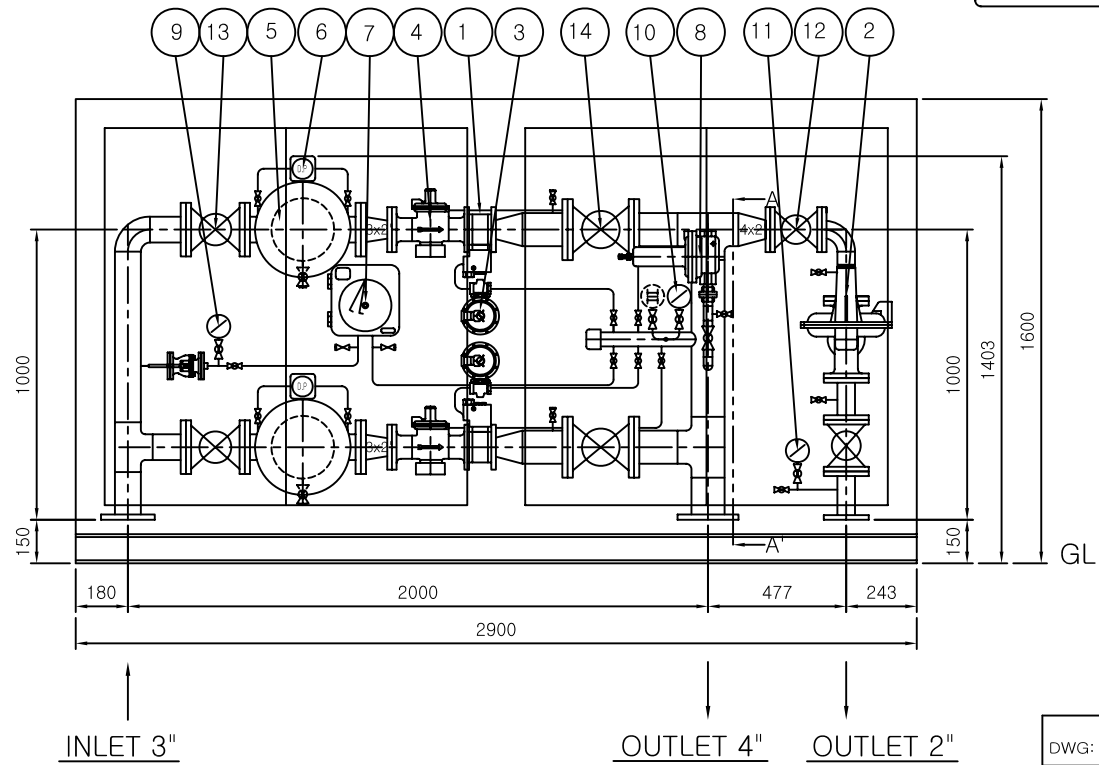
NO	DESCRIPTION	SIZE	Q'TY	REMARKS
1	A.F.V(ANSI300#)	2"	2	A. M. C
2	1843 REGULATOR	2"	1	A. M. C
3	1203 PILOT	3/4"	2	A. M. C
4	OPSO VALVE	2"	2	A. M. C
5	FILTER (G2.0, HFH, 1MPa)	3"	2	SE JONG
6	D.P GAGUE (0-70kPa)	1/4"	2	SE JONG
7	RECORDER (1-0.1MPa, 7D)	2PEN	1	SE JONG
8	J48KH RELIEF	1"	1	JEAVONS
9	PRESSURE GAUGE (0-1.5MPa)	φ100	1	WOO JIN
10	PRESSURE GAUGE (0-0.1MPa)	φ100	1	WOO JIN
11	PRESSURE GAUGE (0-10kPa)	φ100	1	WOO JIN
12	BALL VALVE (1MPa)	2"	2	TAI YANG
13	BALL VALVE (1MPa)	3"	2	TAI YANG
14	BALL VALVE (1MPa)	4"	2	TAI YANG

HOUSING

1. MAT'L : SUS304, 1.2t
2. SIZE : 2900Lx800Wx1500H
3. DOOR : 전면 (1개소)
4. 환기구 : 300x250 (4개소)



VIEW : A-A'(S=1:1)



DWG: K.S.K	PROJECT TITLE	DATE	SCALE	P/SCALE	DWG NO.
DES: N.G.K	대한도시가스 특정 정압기	2004. 02. 18.	1/10	A-2	DH0404050
CHK: Y.K.P					
APPD: J.G.R					
TITLE AFV-2HM+1843 (S) REG' STATION					
<b>世宗에이엠씨株式會社</b> <b>SETONG-AMC CORPORATION</b>					